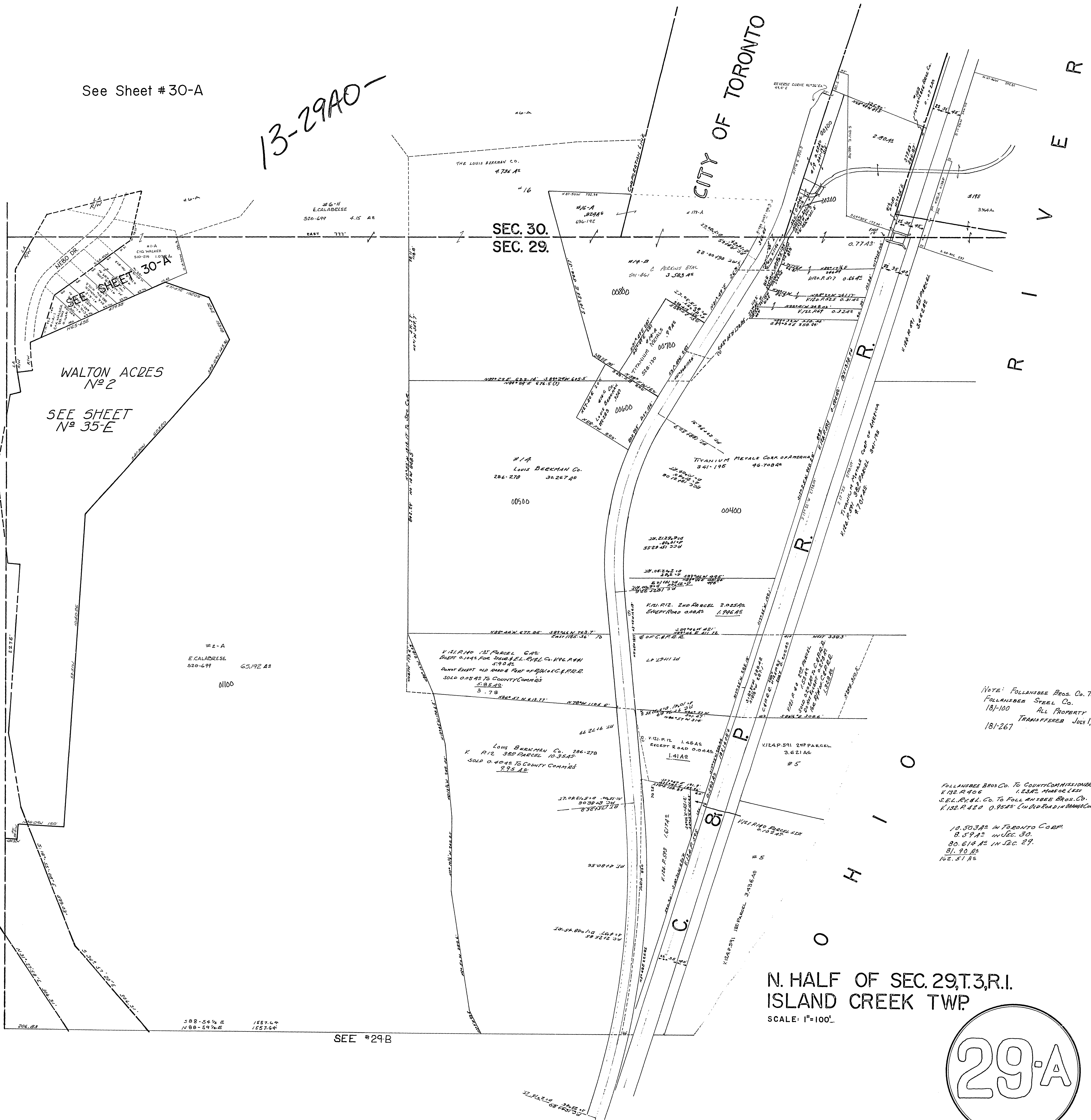


See Sheet #30-A

13-29A0-



NOTE: FOLLANSBEE BROS. CO. TO
 FOLLANSBEE STEEL CO.
 181-100 ALL PROPERTY
 TRANSFERRED JULY 1, 1940
 181-267

FOLLANSBEE BROS. CO. TO COUNTY COMMISSIONERS
 K 132. R 406 1.2345 ACRES OR LESS
 S.E.L. R.1. 81. CO. TO FOLLANSBEE BROS. CO.
 K 132. R. 420 0.9545 ACRES (IN OLD ROAD IN DANNEBERG)

10.5034 AC IN TORONTO CORP
 8.5943 AC IN SEC. 30.
 80.614 AC IN SEC. 29.
 81.90 AC
 162.51 AC